



A QUALICO Company

PRAIRIEHAVEN

825 PLAN

(b-rev 10-10-19)

Highlighted Features Include:

- Attractive front elevation details
- 20' x 22' double car garage
- Open concept layout
- Kitchen with island, breakfast bar and walk-in pantry
- Main floor study and large foyer
- Main floor laundry / mudroom
- Great room with open ceiling
- Spacious master bedroom with walk-in closet and ensuite
- Variety of floor plan options to choose from, such as 4th bedroom and laundry option, or walk-thru pantry, etc.
- Designer faucets
- Decora switches
- LED lighting package
- Triple pane and dual Low-E windows
- Premium trimwork
- 1-2-5-10 National Home Warranty

Elevation A



Not exactly as shown. Final drawings and elevation details are per offer to purchase and subject to architectural approval.



2-Storey



2 1/2 Bathrooms



3 Bedrooms

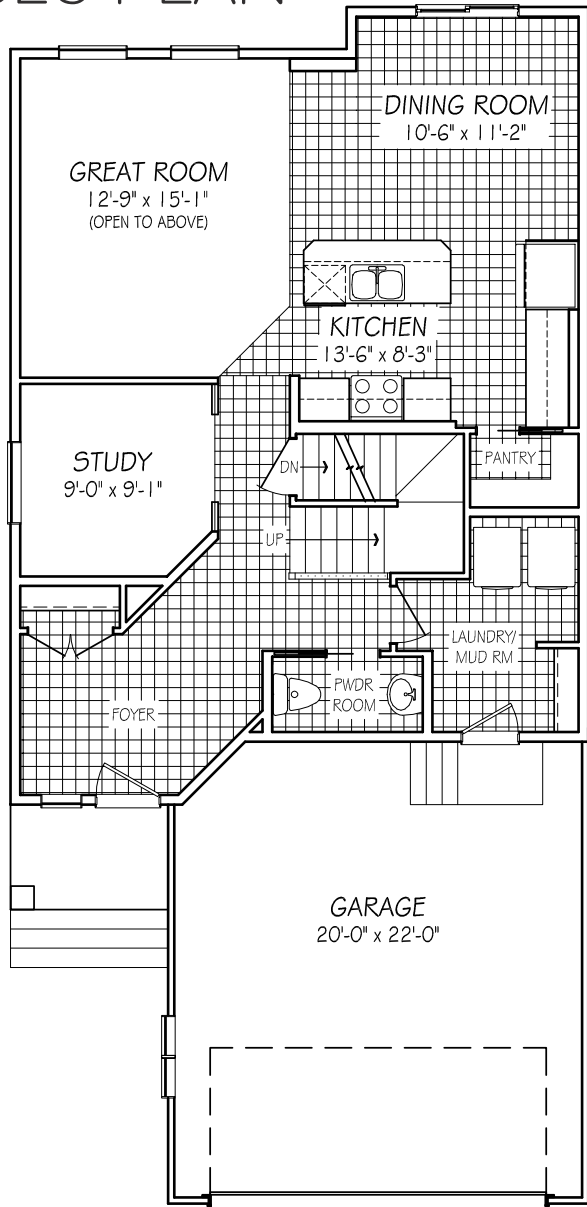


1841 sq. ft.

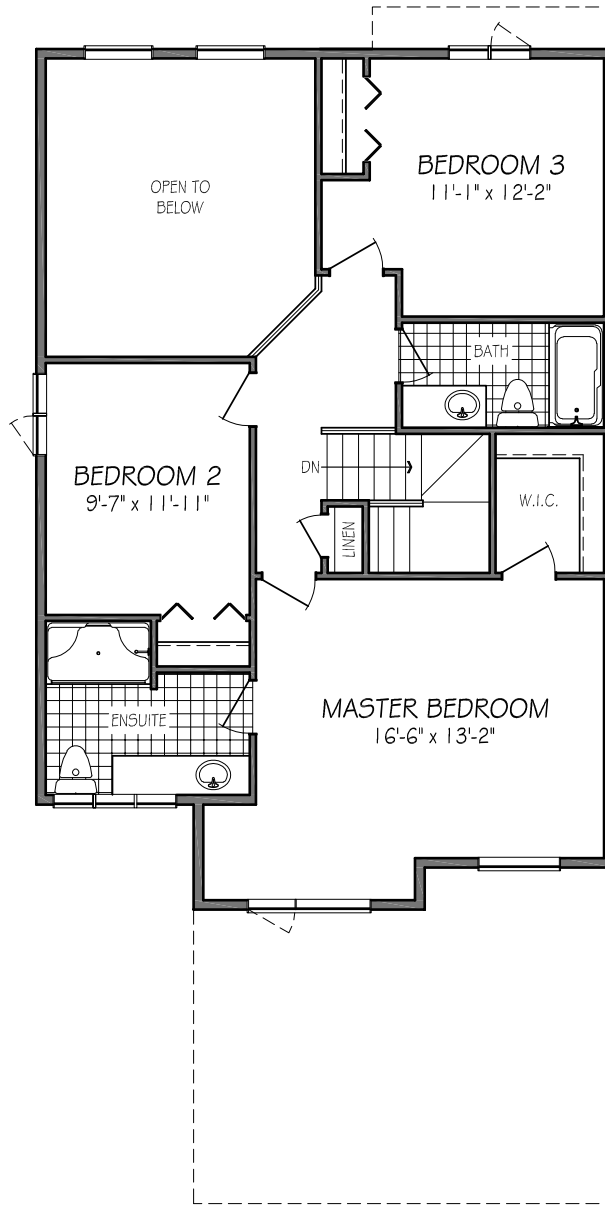
Elevation B



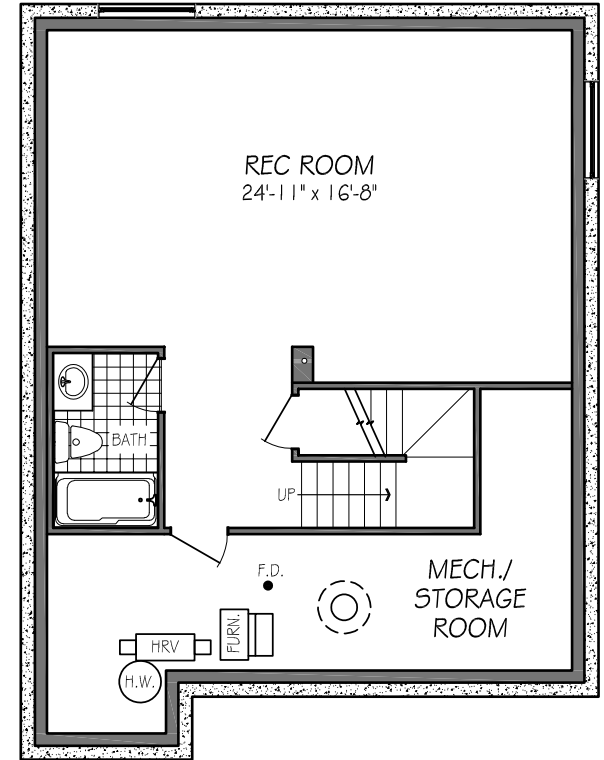
825 PLAN



MAIN FLOOR PLAN
959 SQ. FT.



SECOND FLOOR PLAN
882 SQ. FT.



OPTIONAL BASEMENT FLOOR PLAN
507 SQ. FT.