



2 Storey



4 Bedrooms



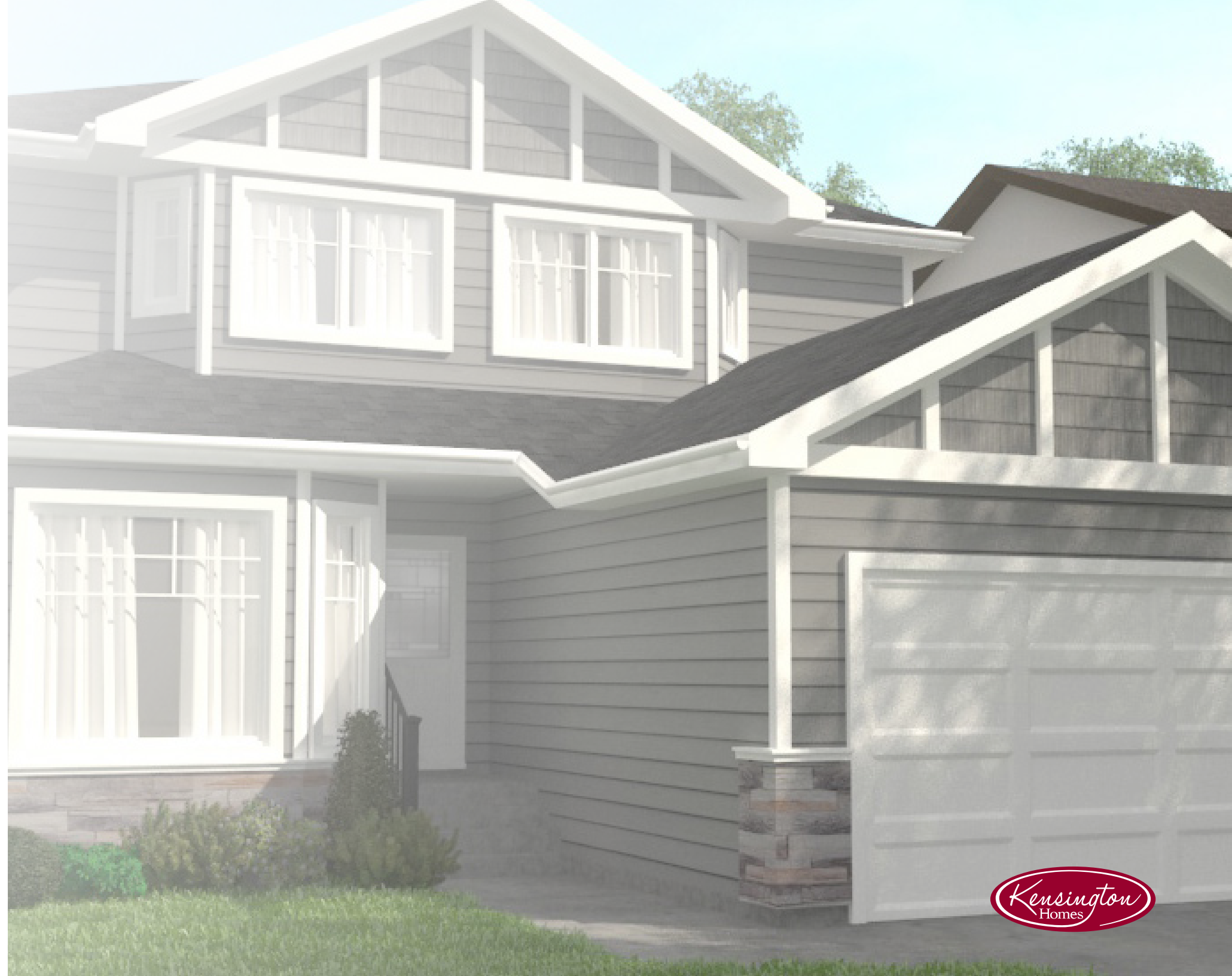
2 ½ Bathrooms



2071 sq. ft.

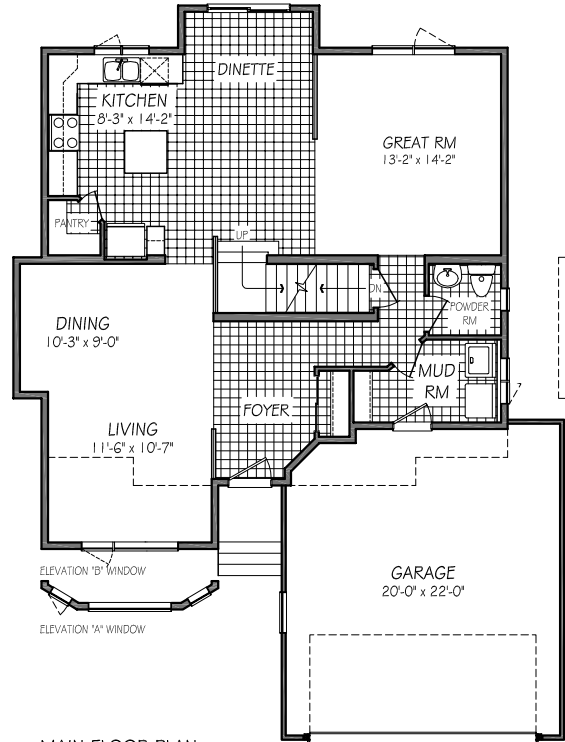
Highlighted Features Include:

- Spacious 4 bedroom home with opt'l lower level development plan
- Large master bedroom with ensuite
- Master, bedrooms 2 & 3 have walk-in closets
- Open kitchen layout with island and corner pantry
- Main floor with dining room, living room and great room, as well as a dinette
- Main floor laundry/mudroom
- 20' x 22' standard sized garage
- Many other attractive details and options
- 1-2-5-10 National Home Warranty

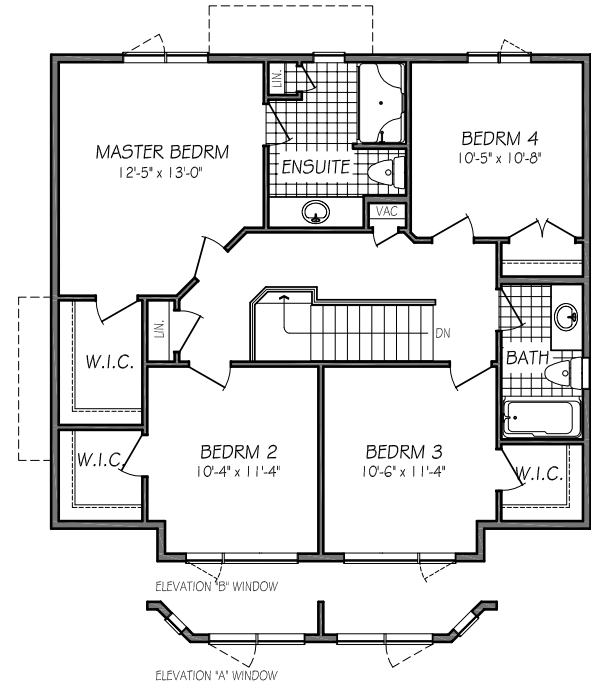


FLOOR PLAN

(b-rev3-7-18)



MAIN FLOOR PLAN
1074 SQ. FT.



SECOND FLOOR PLAN
997 SQ. FT.



One Dr. David Friesen Drive
Winnipeg, Manitoba
R3X 0G8

Phone: (204) 224-4243
kensingtonhomes.com

All illustrations are artist's conception and may vary. Room dimensions are approximate. Windows and room sizes may vary with elevations. Mechanical equipment location and placement subject to change as required by building code and at discretion of builder. Furniture outlines for purpose of visualizing room layout only, furniture not included. Kensington Homes reserves the right to change material or specifications without notice.



BRIDGEPORT

850 PLAN