



2 Storey



3 Bedrooms



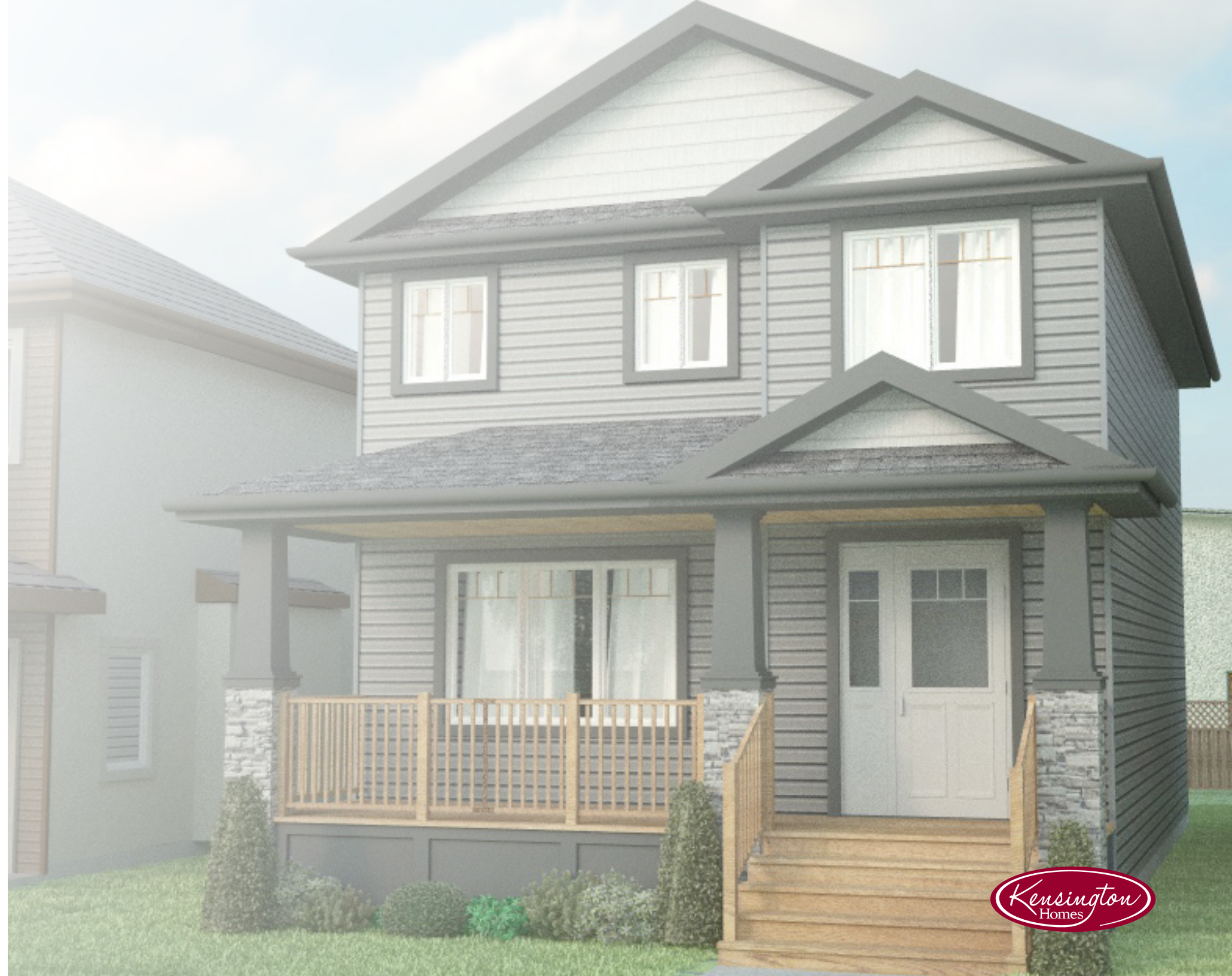
2 ½ Bathrooms



1557 sq. ft.

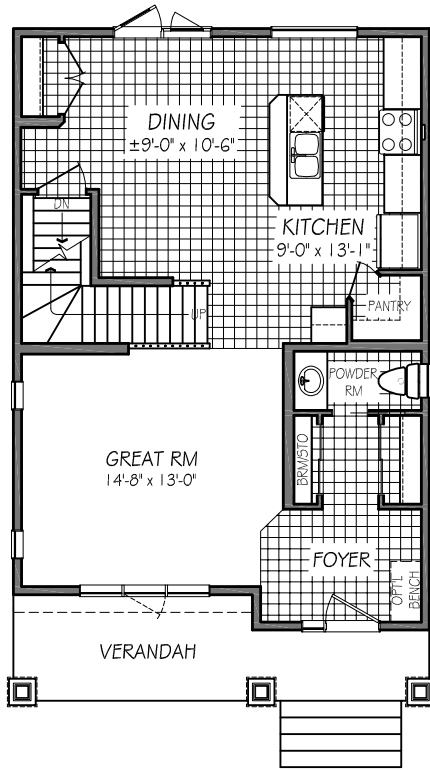
Highlighted Features Include:

- Covered entryway and veranda with wood steps, porch, and railings
- Open-style kitchen with island and breakfast bar
- Large front foyer with main floor powder room
- Convenient 2nd floor laundry room
- Master suite with large walk-in closet and ensuite
- LED lighting package
- Spacious great room
- Professionally designed kitchen cabinetry
- Pile foundation
- Industry leading standard features.
- 1-2-5-10 National Home Warranty

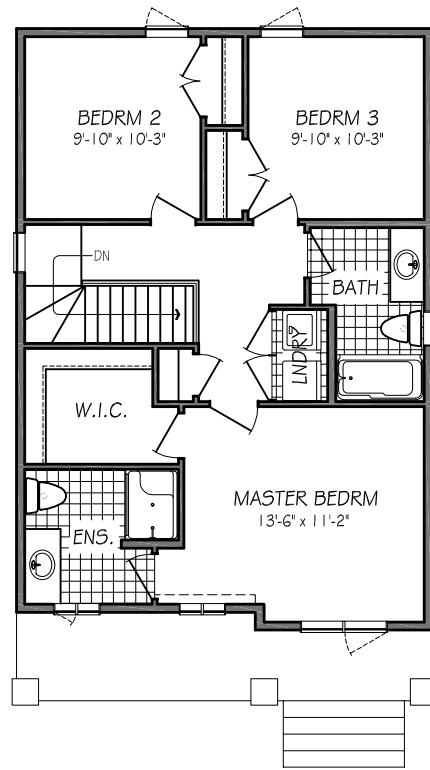


FLOOR PLAN

(b-rev2-7-18)



MAIN FLOOR PLAN
772 SQ. FT.



SECOND FLOOR PLAN
785 SQ. FT.



One Dr. David Friesen Drive
Winnipeg, Manitoba
R3X 0G8

Phone: (204) 224-4243
kensingtonhomes.com

All illustrations are artist's conception and may vary. Room dimensions are approximate. Windows and room sizes may vary with elevations. Mechanical equipment location and placement subject to change as required by building code and at discretion of builder. Furniture outlines for purpose of visualizing room layout only, furniture not included. Kensington Homes reserves the right to change material or specifications without notice.



CASCADE

806 PLAN