



2 Storey



3 Bedrooms



2 ½ Bathrooms



1592 sq. ft.

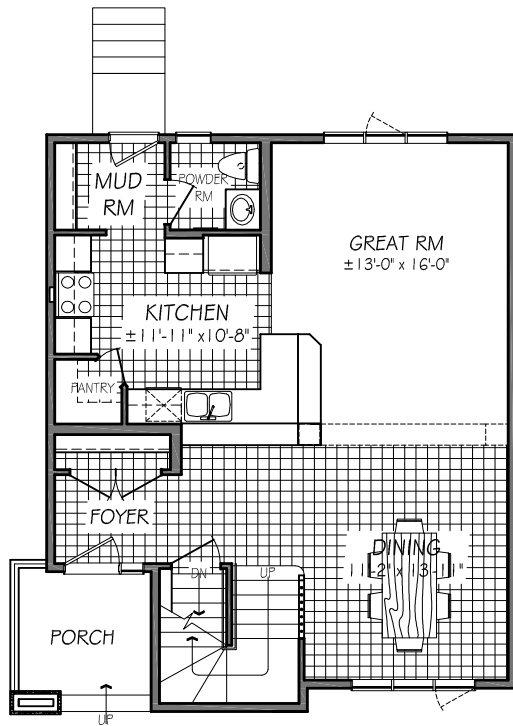
Highlighted Features Include:

- Cultured stone details on front elevation
- Professionally designed kitchen cabinetry
- Kitchen with walk-in pantry and breakfast bar
- Ensuite includes 5' shower with seating
- Master bedroom with large walk-in closet
- Industry leading standard features throughout
- 1-2-5-10 National Home Warranty

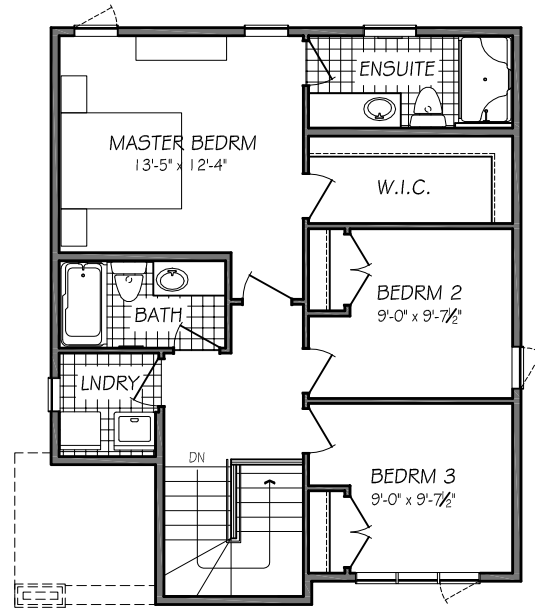


FLOOR PLAN

(b-rev2-7-18)



MAIN FLOOR PLAN
796 SQ. FT.



SECOND FLOOR PLAN
796 SQ. FT.



CALIFORNIA

1100 A PLAN

One Dr. David Friesen Drive
Winnipeg, Manitoba
R3X 0G8

Phone: (204) 224-4243
kensingtonhomes.com

All illustrations are artist's conception and may vary. Room dimensions are approximate. Windows and room sizes may vary with elevations. Mechanical equipment location and placement subject to change as required by building code and at discretion of builder. Furniture outlines for purpose of visualizing room layout only, furniture not included. Kensington Homes reserves the right to change material or specifications without notice.

