



A QUALICO Company

SOUTHBURY

856 PLAN

(b-rev 11-18-21)

Elevation A

Highlighted Features Include:

- 20' x 22' attached garage
- Convenient mudroom with walk-in closet
- Spacious kitchen with walk-in pantry
- Second floor laundry room and loft space
- Smooth painted ceilings
- Moen faucets
- Decora switches
- LED lighting package
- Triple pane and dual pane low-e windows
- 3" MDF baseboards and casings
- 1-2-5-10 National Home Warranty



Not exactly as shown. Final drawings and elevation details are per offer to purchase and subject to architectural approval.



2 Storey



2,189 sq. ft.



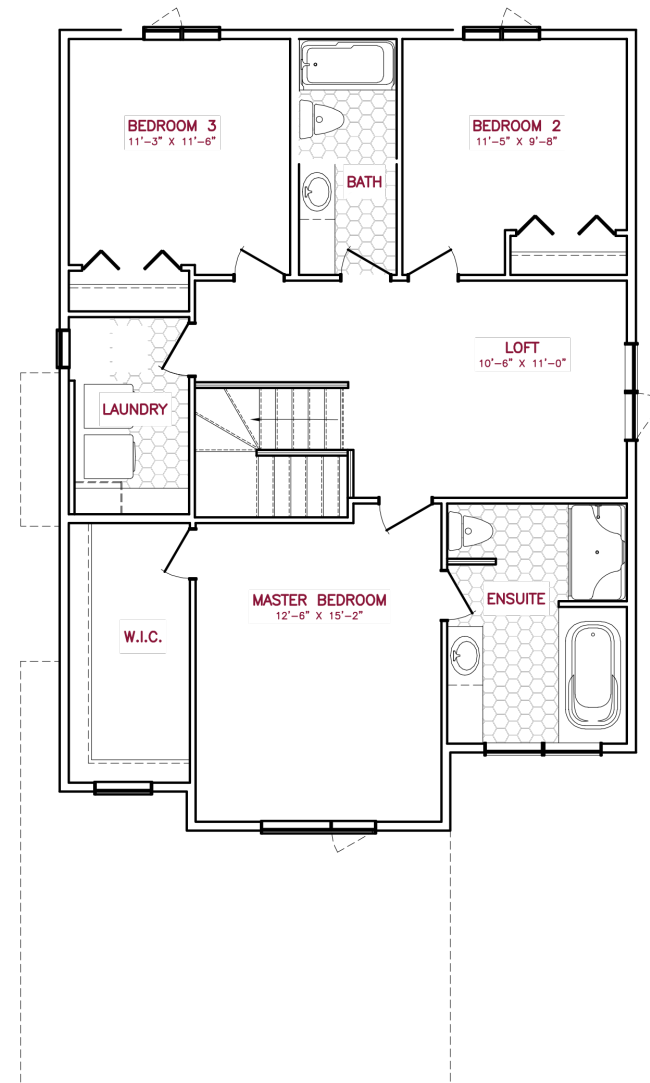
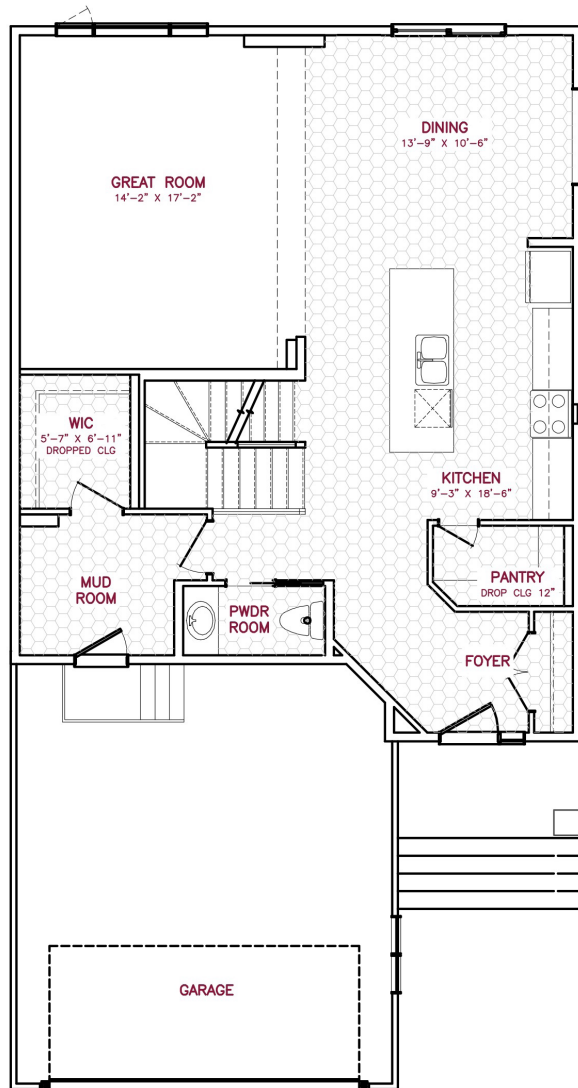
3 Bedrooms



2 1/2 Bathrooms

SOLID FOUNDATIONS START HERE

856 PLAN



One Dr. David Friesen Drive
Winnipeg, Manitoba

Phone: (204) 224-4243
kensingtonhomes.com

All illustrations are artist's conception and may vary. Room dimensions are approximate. Windows and room sizes may vary with elevations. Mechanical equipment location and placement subject to change as required by building code and at discretion of builder. Furniture outlines for purpose of visualizing room layout only, furniture not included. Kensington Homes reserves the right to change material or specifications without notice.



A QUALICO Company