

HILLCREST

845 PLAN

Elevation A



Highlighted Features Include:

- 20' x 22' attached garage
- Front exterior with vinyl siding, shakes, and smart trim details
- Enclosed mud room
- Kitchen with professionally designed cabinetry, island, and walk-in pantry
- 9' ceilings in great room
- Second floor laundry
- Primary bedroom with massive walk-in closet and spacious ensuite
- LED lighting package
- Triple pane and dual pane Low-E windows
- 4" MDF baseboards and 3" casings
- 1-2-5-10 National Home Warranty



2 Storey



1,699 sq.ft.+/-



3 Bedrooms



2.5 Bathrooms

SOLID FOUNDATIONS START HERE

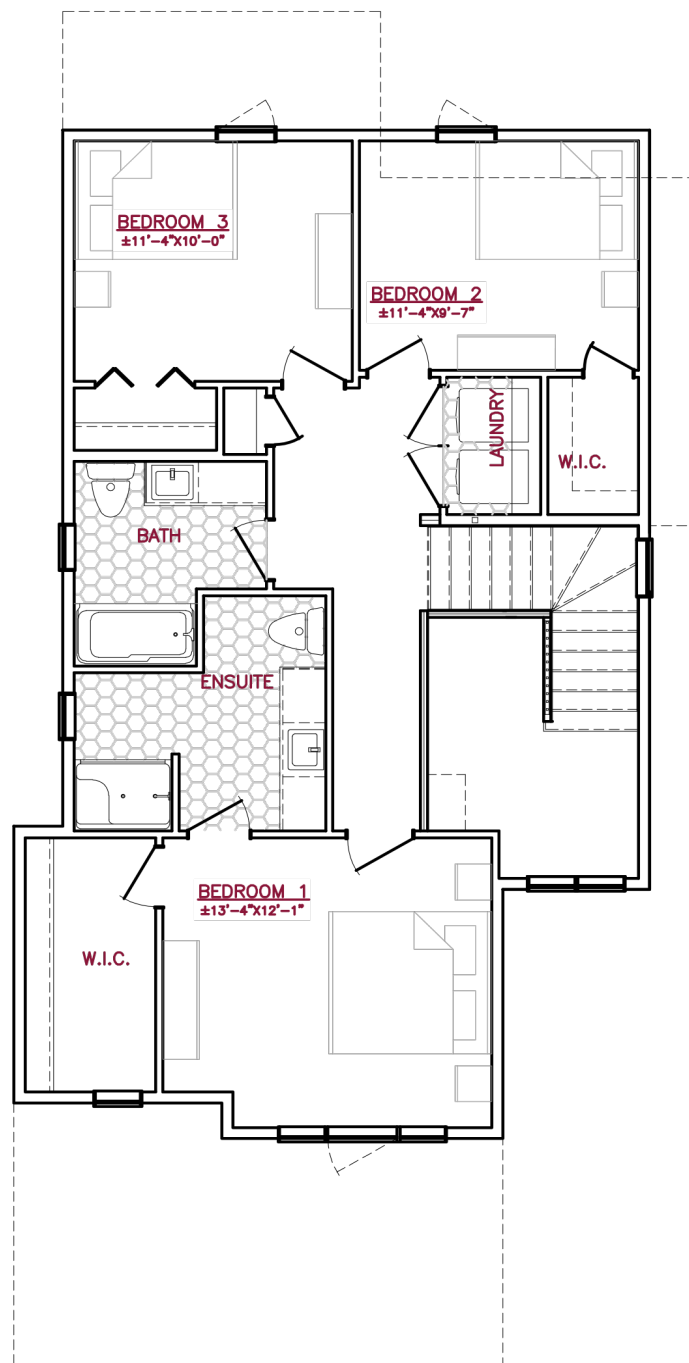
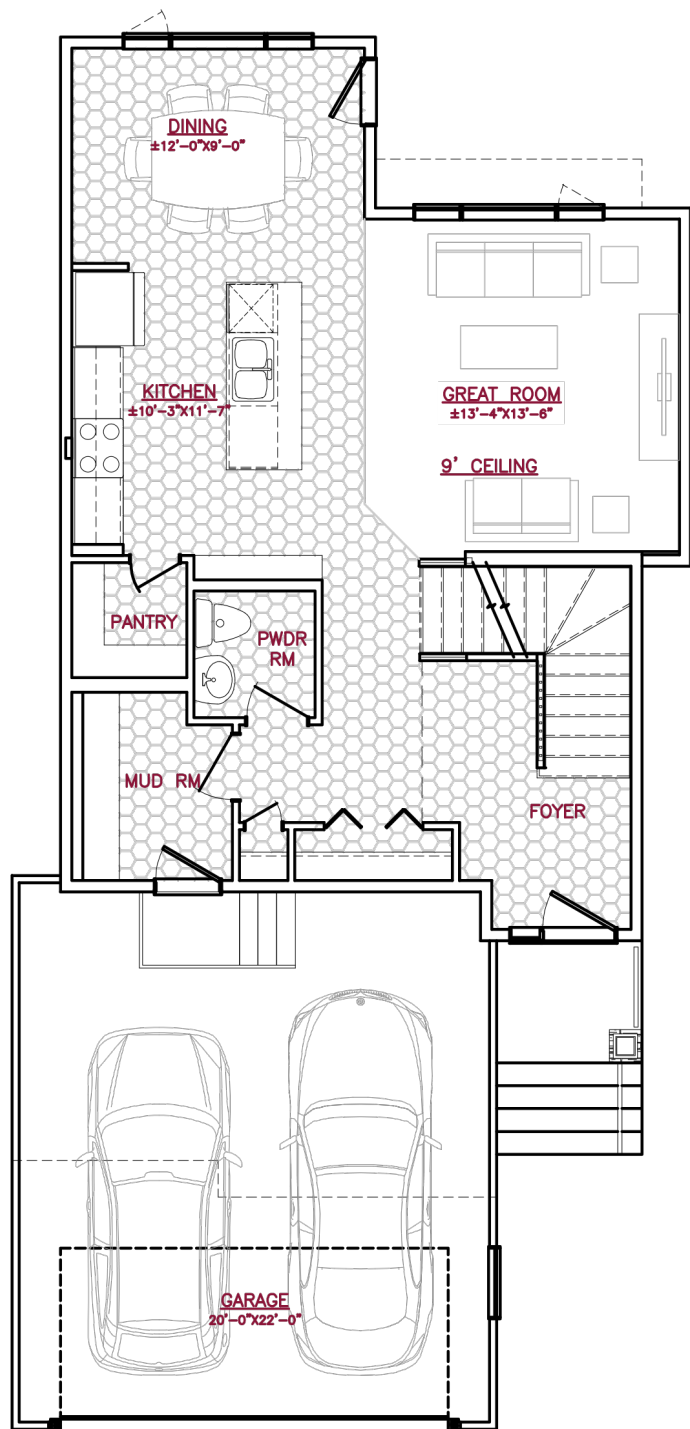


A QUALICO Company

845 PLAN



A QUALICO® Company



One Dr. David Friesen Drive
Winnipeg, Manitoba

Phone: (204) 224-4243
kensingtonhomes.com

All illustrations are artist's conception and may vary. Room dimensions are approximate. Windows and room sizes may vary with elevations. Mechanical equipment location and placement subject to change as required by building code and at discretion of builder. Furniture outlines for purpose of visualizing room layout only, furniture not included. Kensington Homes reserves the right to change material or specifications without notice.

Plan Rev-5/30/23