



A QUALICO® Company

## Highlighted Features Include:

- 20' x 22' double car garage
- Smooth painted ceilings
- Open concept layout
- Kitchen with island and walk-in pantry
- Spacious master bedroom with walk-in closet and 3 piece ensuite
- Convenient second floor laundry room
- LED lighting package
- Natural gas high-efficiency furnace
- Triple pane and dual pane low-e windows
- 3" MDF flat baseboards
- Moen faucets
- Decora switches
- 1-2-5-10 National Home Warranty

# ASHFORD

## 831 PLAN

Elevation D



Not exactly as shown. Final drawings and elevation details are per offer to purchase and subject to architectural approval. Colour windows and grills are optional upgrades.



2 Storey



1,847 sq. ft.



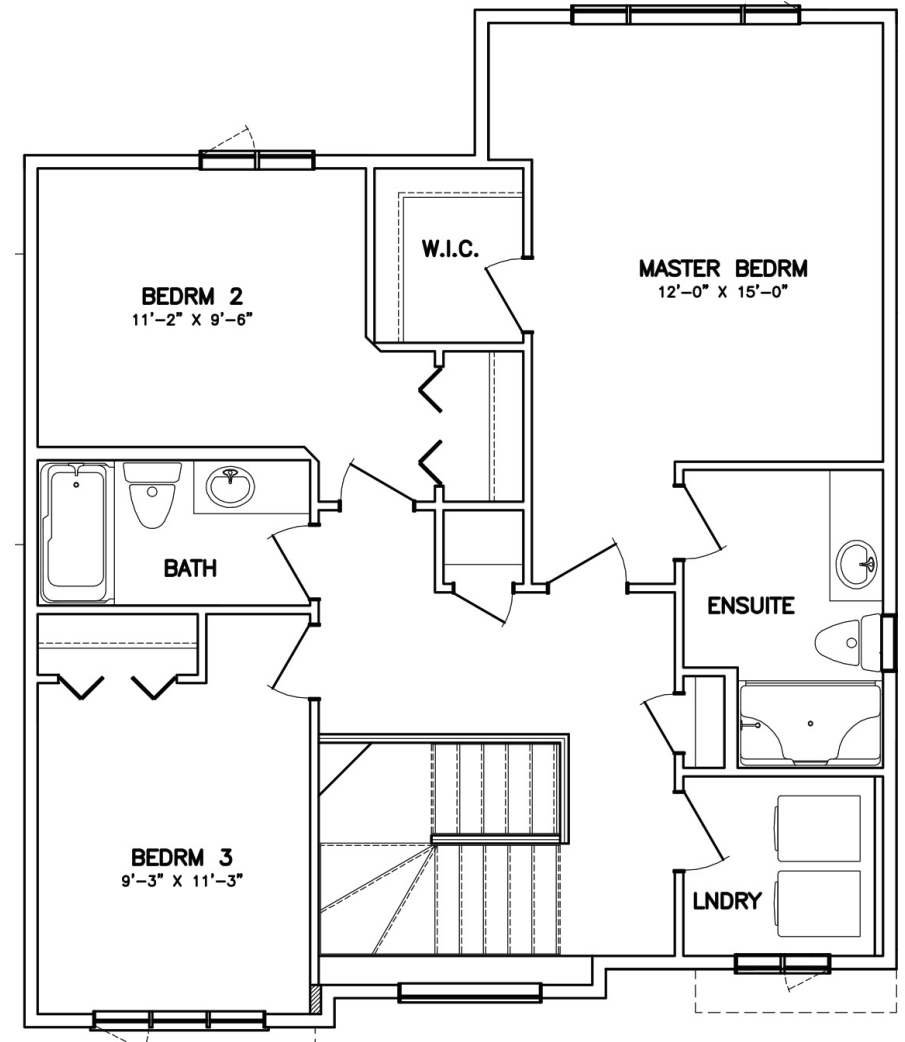
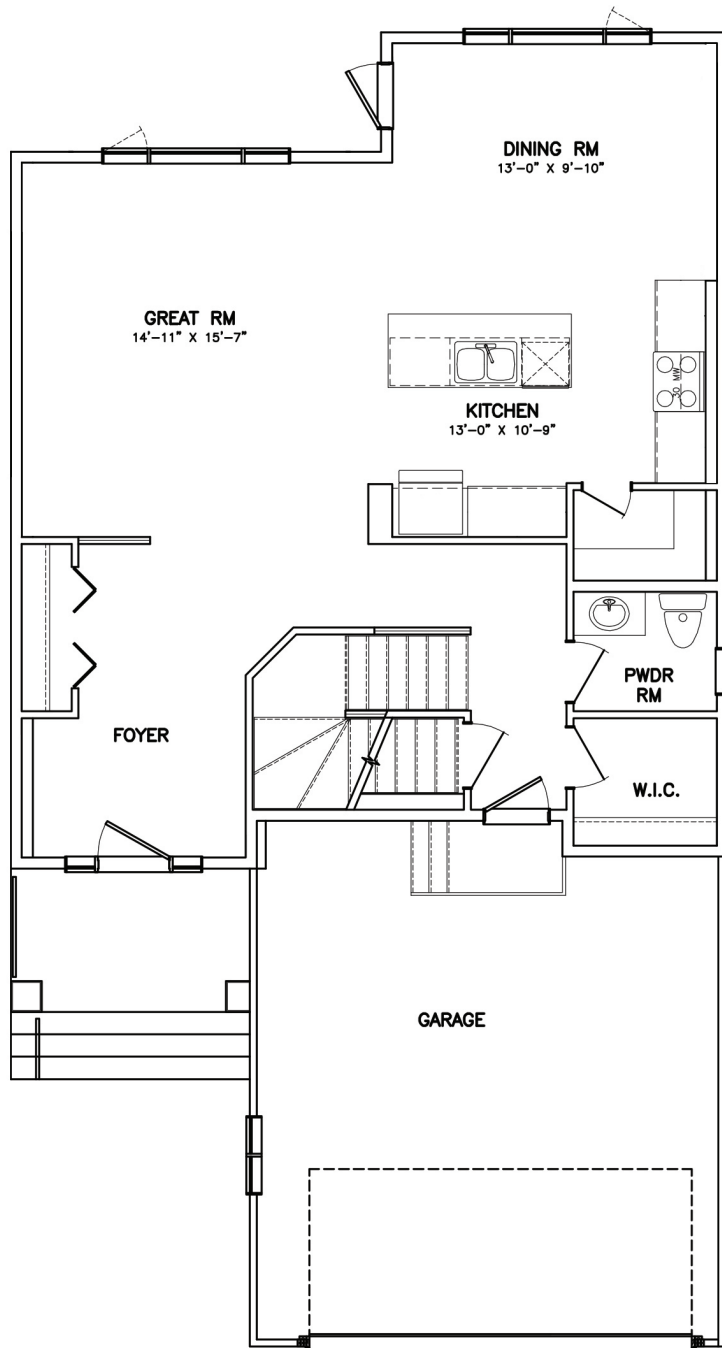
3 Bedrooms



2 1/2 Bathrooms

SOLID FOUNDATIONS START HERE

# 831 PLAN



(b-rev 2-12-21)

One Dr. David Friesen Drive  
Winnipeg, Manitoba

Phone: (204) 224-4243  
kensingtonhomes.com

All illustrations are artist's conception and may vary. Room dimensions are approximate. Windows and room sizes may vary with elevations. Mechanical equipment location and placement subject to change as required by building code and at discretion of builder. Furniture outlines for purpose of visualizing room layout only, furniture not included. Kensington Homes reserves the right to change material or specifications without notice.

