



A QUALICO® Company

## Highlighted Features Include:

- Attractive front elevation details
- Triple car garage
- Rear covered deck
- Open concept layout
- Spacious mudroom with walk-in closet and laundry
- 10' raised ceiling in dining room and great room
- Master bedroom with ensuite and walk-in closet
- Smooth painted ceilings
- Moen faucets
- LED lighting package
- 3" MDF flat baseboards
- Decora switches
- Triple pane and dual-Low E windows
- 1-2-5-10 National Home Warranty

# CAMBRIDGE

## 1045 PLAN



Not exactly as shown. Final drawings and elevation details are per offer to purchase and subject to architectural approval.



Bungalow



3 Bedrooms



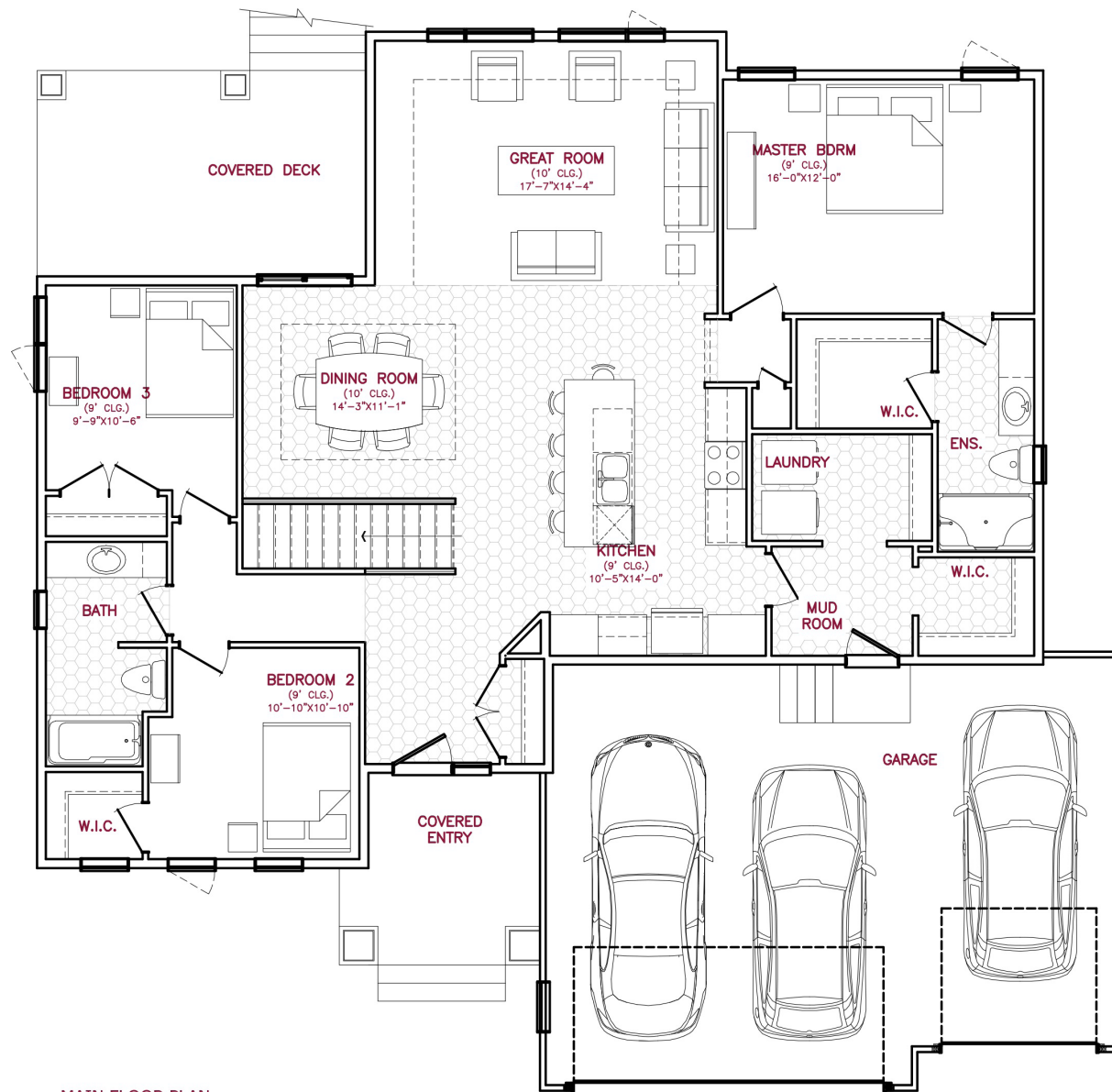
2 Bathrooms



1,684 sq. ft.

SOLID FOUNDATIONS START HERE

# 1045 PLAN



**MAIN FLOOR PLAN**  
1684 SQ. FT.

One Dr. David Friesen Drive  
Winnipeg, Manitoba  
R3X 0G8

Phone: (204) 224-4243  
kensingtonhomes.com

All illustrations are artist's conception and may vary. Room dimensions are approximate. Windows and room sizes may vary with elevations. Mechanical equipment location and placement subject to change as required by building code and at discretion of builder. Furniture outlines for purpose of visualizing room layout only, furniture not included. Kensington Homes reserves the right to change material or specifications without notice.

