



A QUALICO Company

395 Cherrywood Road

BRIDGWATER TRAILS

VISTA

Highlighted Features

(included in price):

- Attractive front elevation details
- Open concept layout
- Professionally designed kitchen with walk-in pantry and island
- Master bedroom with walk-in closet and ensuite
- Convenient 2nd floor laundry
- Designer faucets
- LED lighting package
- Decora switches
- Premium trimwork
- Triple pane and dual Low-E windows
- 1-2-5-10 National Home Warranty



Ask your Sales Representative for more information on this home!



2-Storey



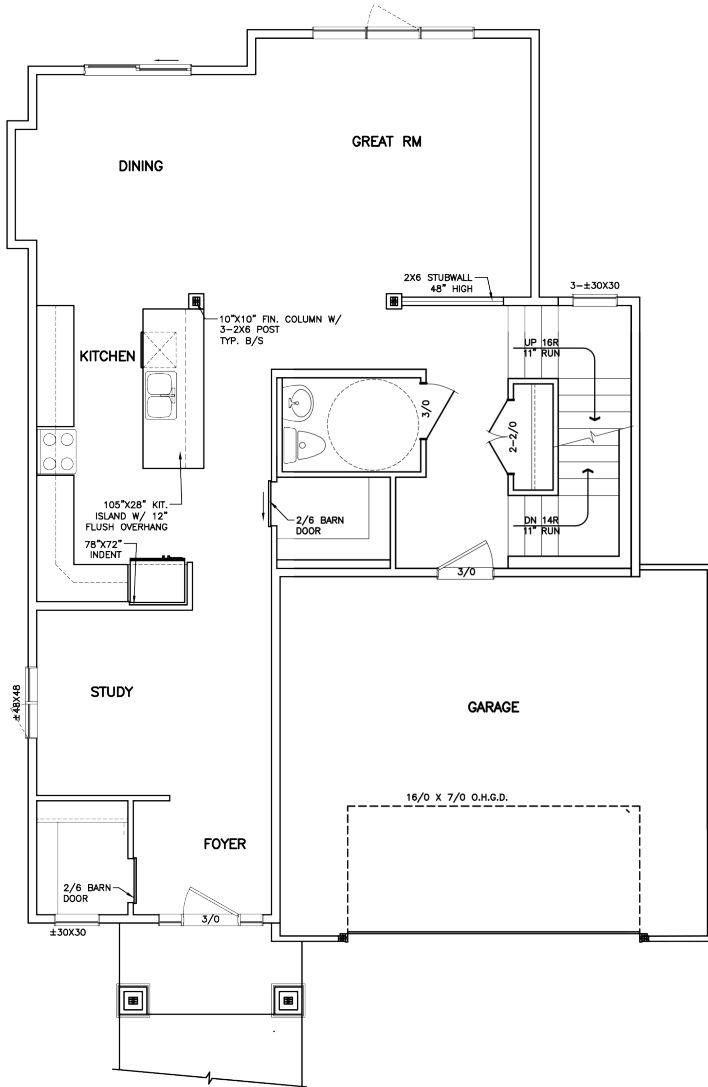
2,142 sq. ft.



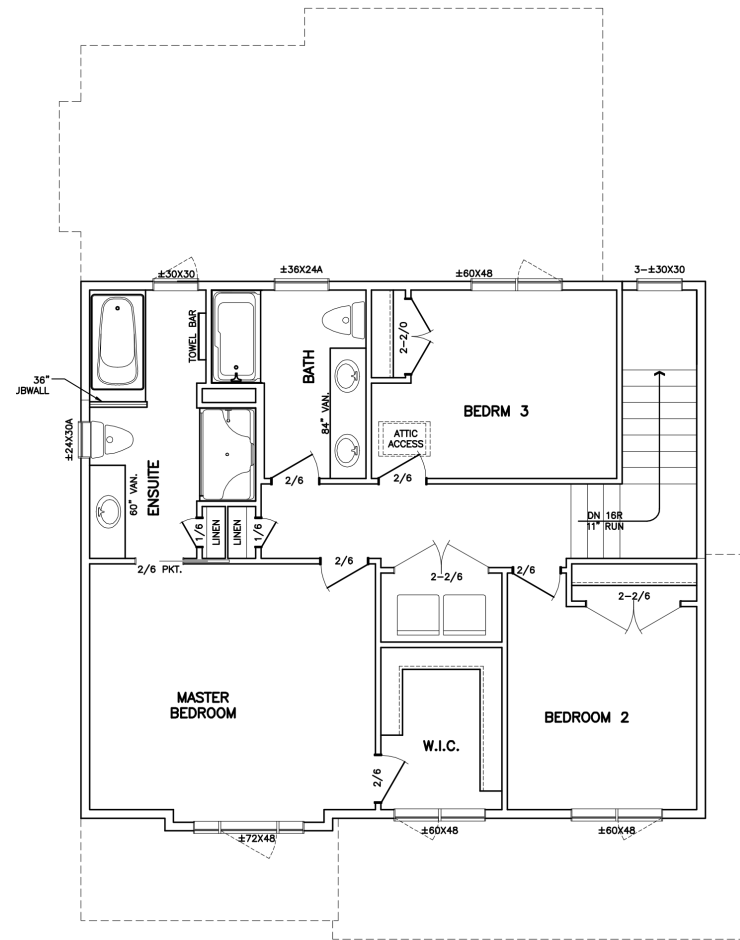
3 Bedrooms



2 1/2 Bathrooms



MAIN FLOOR PLAN
1170 SQ. FT.



SECOND FLOOR PLAN
972 SQ. FT.

