



A QUALICO Company

39 Grey Heron Drive

CAPETOWN II

Schedule 3

SAGE CREEK

Highlighted Features (included in price):

- Attractive front elevation details
- Spacious kitchen with island and walk-in pantry
- Master bedroom with walk-in closet and ensuite
- Designer faucets
- LED lighting package
- Decora switches
- Premium trim work
- Triple pane and dual Low-E windows
- 1-2-5-10 National Home Warranty

Elevation E

Not exactly as shown. Final drawings and elevation details are per offer to purchase and subject to architectural approval.



Ask your
Sales Representative
for more information
on this home!



Bi-level



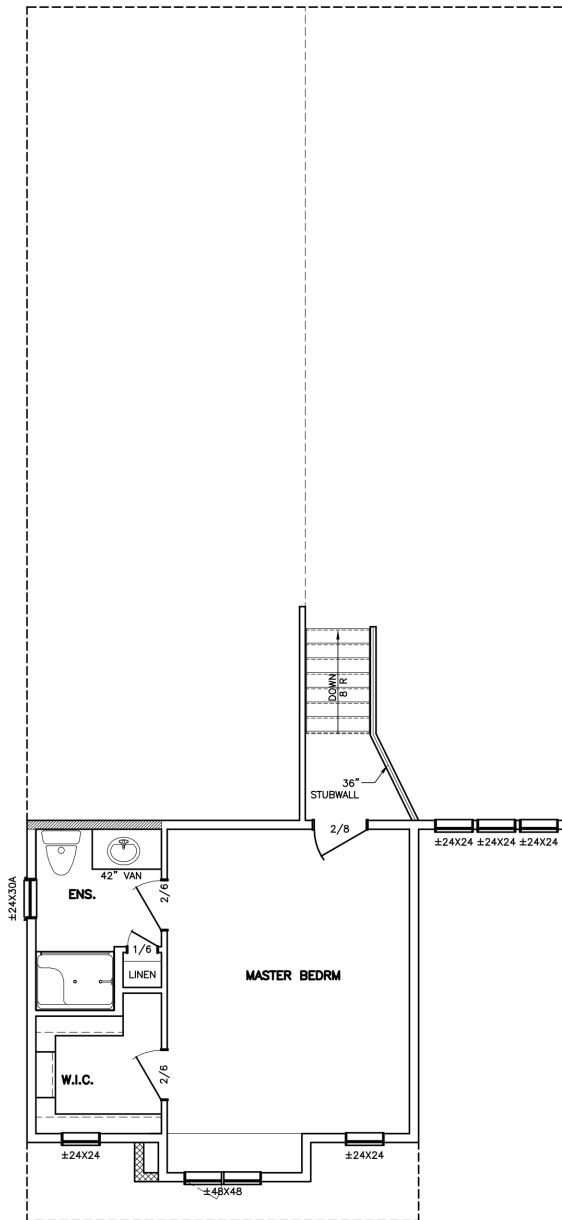
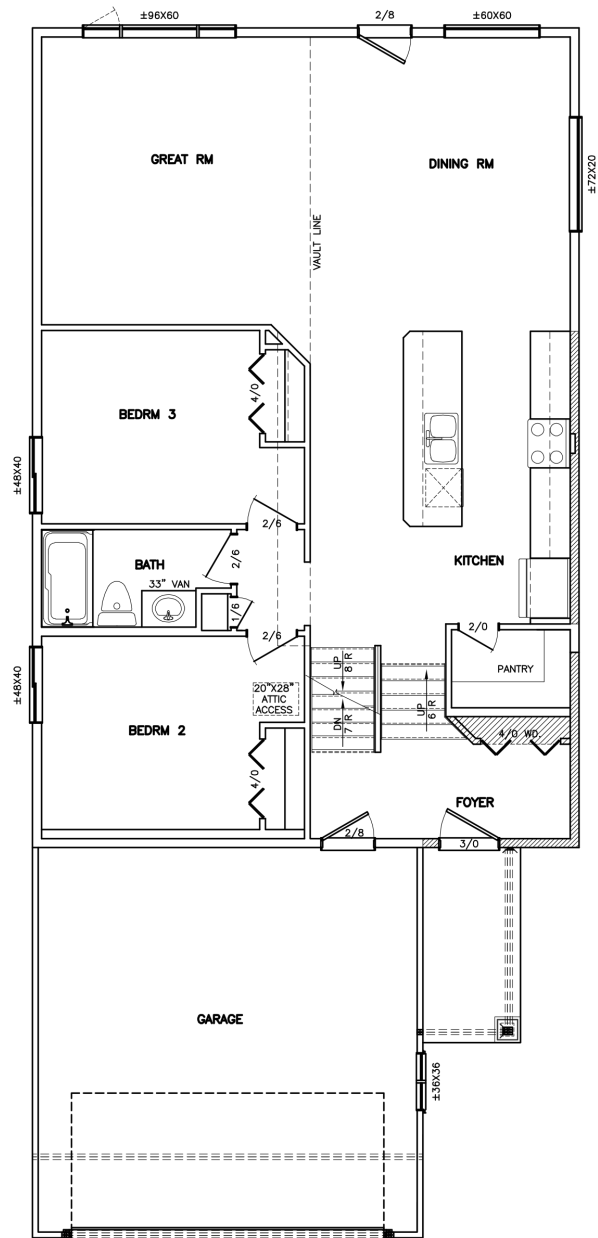
1,547 sq. ft.



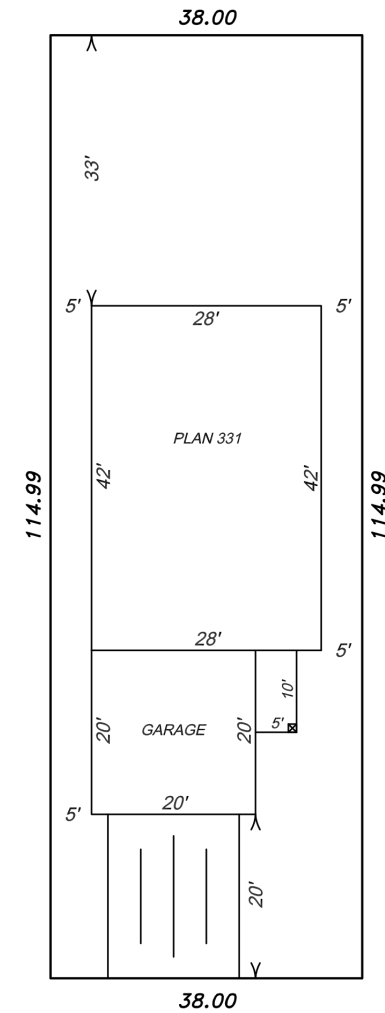
3 Bedrooms



2 Bathrooms



DES HIVERNANTS NORTH



APPROACH TO BE DETERMINED AND TO MEET CITY OF WINNIPEG REQUIREMENTS